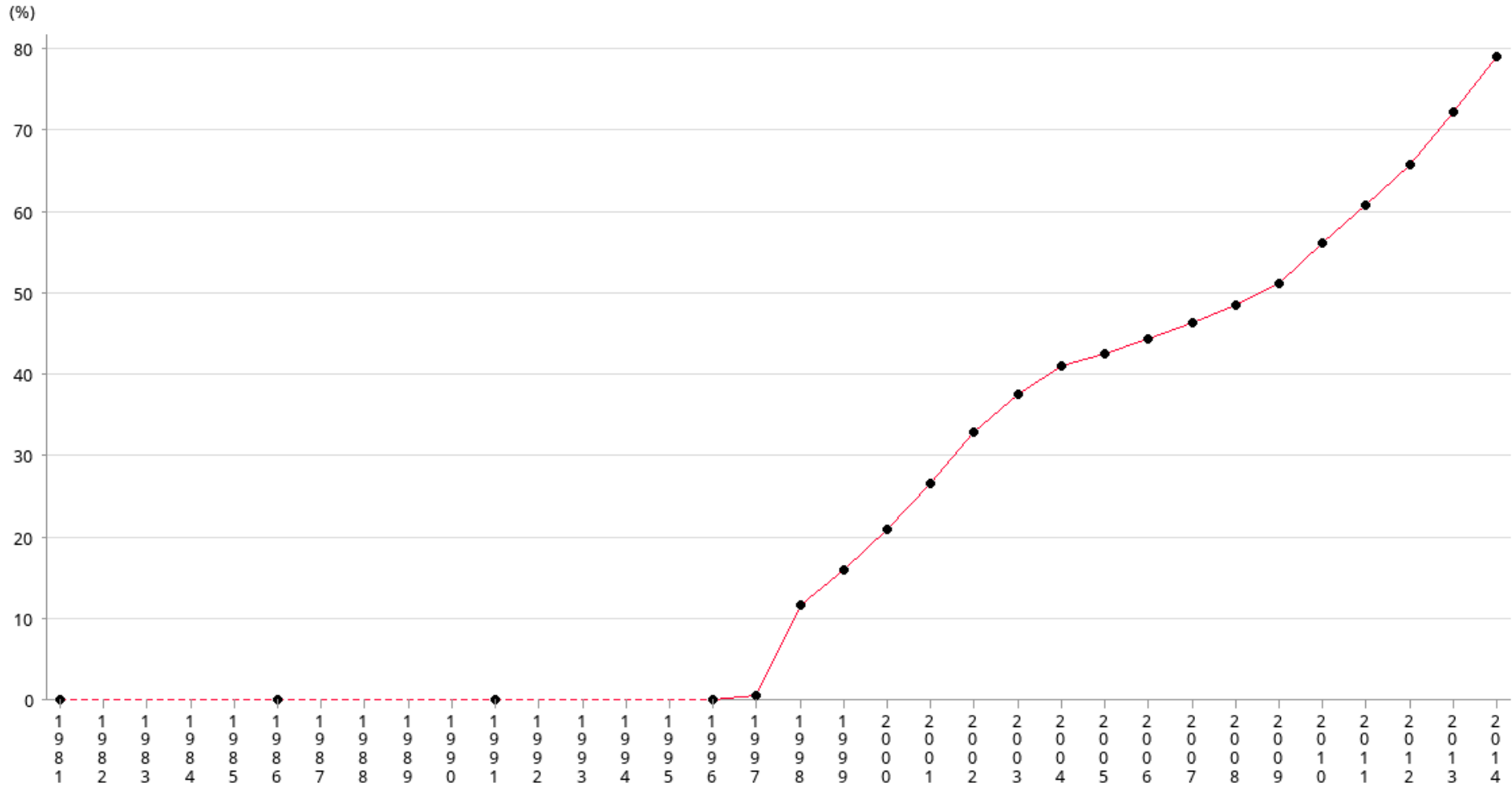


Social Indicators of Hong Kong
 Percentage of Franchised buses for persons with physical disabilities



Year	1981	1986	1991	1996	1997	1998	1999	2000	2001	2002	2003	2004	2005	2006
%	0	0	0	0.04	0.58	11.62	15.96	20.99	26.69	33.07	37.69	41.11	42.63	44.57
Year	2007	2008	2009	2010	2011	2012	2013	2014						
%	46.49	48.72	51.40	56.33	61.06	65.96	72.56	79.31						

Operational Definitions

Percentage of Regular Buses Adapted for Persons with Physical Disabilities

Footnote

All figures are collected from Transport Department since 1981.

Only 3 operators provided bus service in 1981, 1986 and 1991. The Citybus joined in mid 90s. In 1997, Long Win joined the market and in 1998, the New World First Bus commenced its franchise while the China Motor Bus ceased its franchise.

All figures are therefore based on regular fleet size of operators in franchised bus service.

The figures refer to the number of "licensed" franchised buses only. The fleet size as at end 1997 and 1998 are also replaced accordingly. Thus, HKCSS revised the indicator label as "Percentage of franchised buses for persons with physical disabilities". The original label is "Percentage of regular buses adapted for persons with physical disabilities".