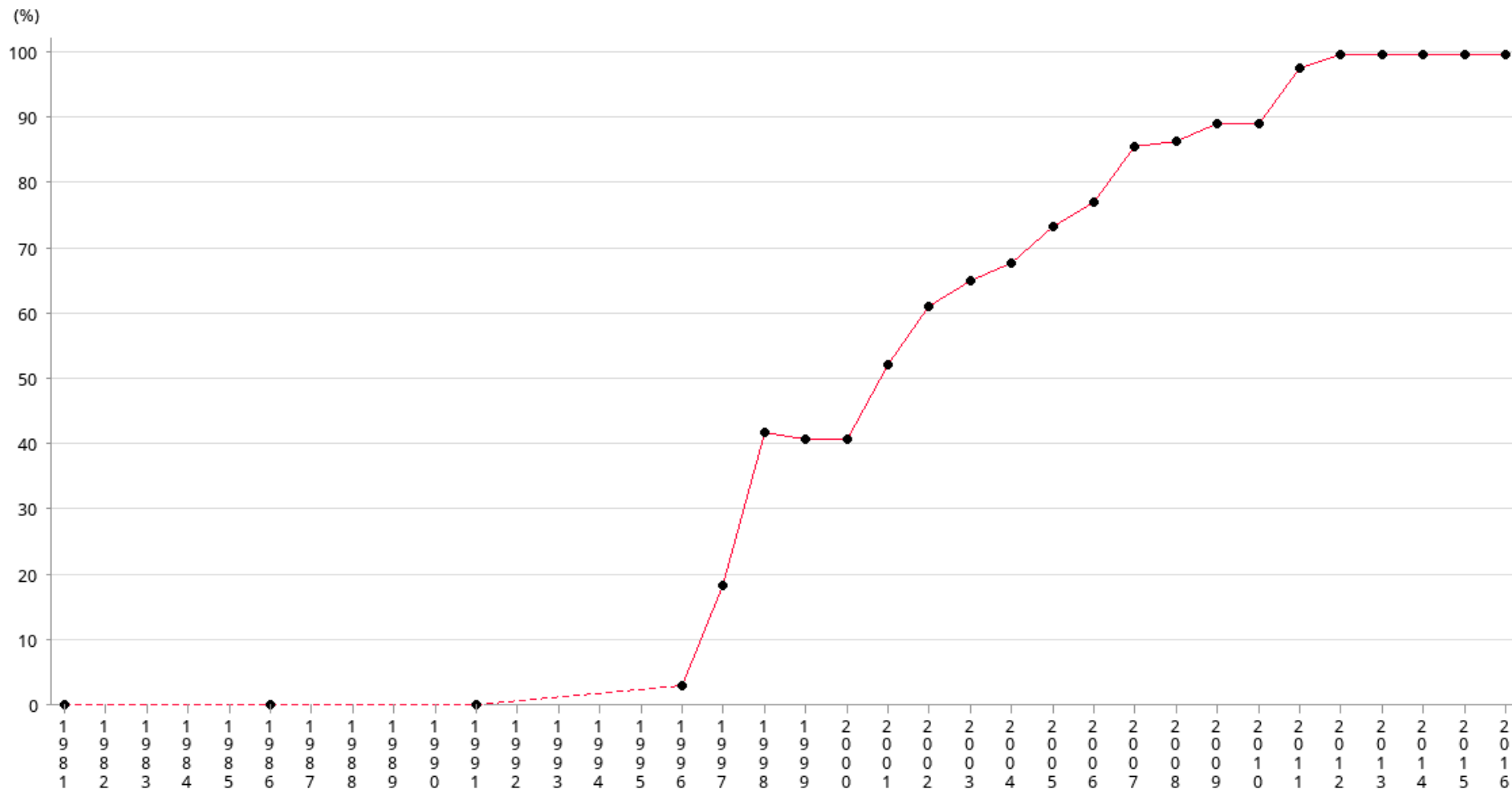


Percentage of MTR stations with barrier-free access between ground levels and platforms



Year	1981	1986	1991	1996	1997	1998	1999	2000	2001	2002	2003	2004	2005	2006
%	0	0	0	3	18.42	41.86	40.91	40.91	52.27	61.22	65.31	68	73.58	77.36
Year	2007	2008	2009	2010	2011	2012	2013	2014	2015	2016				
%	85.88	86.59	89.29	89.29	98	100	100	100	100	100				

### Operational Definitions

The percentage of Mass Transit Railway stations which include at least one barrier-free access for disabilities passengers to access from ground levels to platforms. (Barrier-free access includes lift, stair lift, wheelchair aid, ramp, and some station concourses are connected with the ground levels at the same level.)

### Footnote

All figures are collected from Transport Department since 1981.

Due to the merge of operations of MTR and KCRC on 2 December 2007, they have provided separate figures for both former MTR and KCR systems in 2007.

The main barrier for passengers with disabilities in using MTR old lines, including KTL, TWL and ISL, is the access link from street level to platform. The new railways like AEL, TCL and TKL are with step free independent access design between the street (ground) level and the platform and hence with no such problem of access.

For the figures in 2007, 3 interchange stations (Mei Foo, Kowloon Tong and Nam Cheong) are counted twice under MTR network as well as KCR network. For the figures in 2008, the 3 stations are counted once only under MTR network.