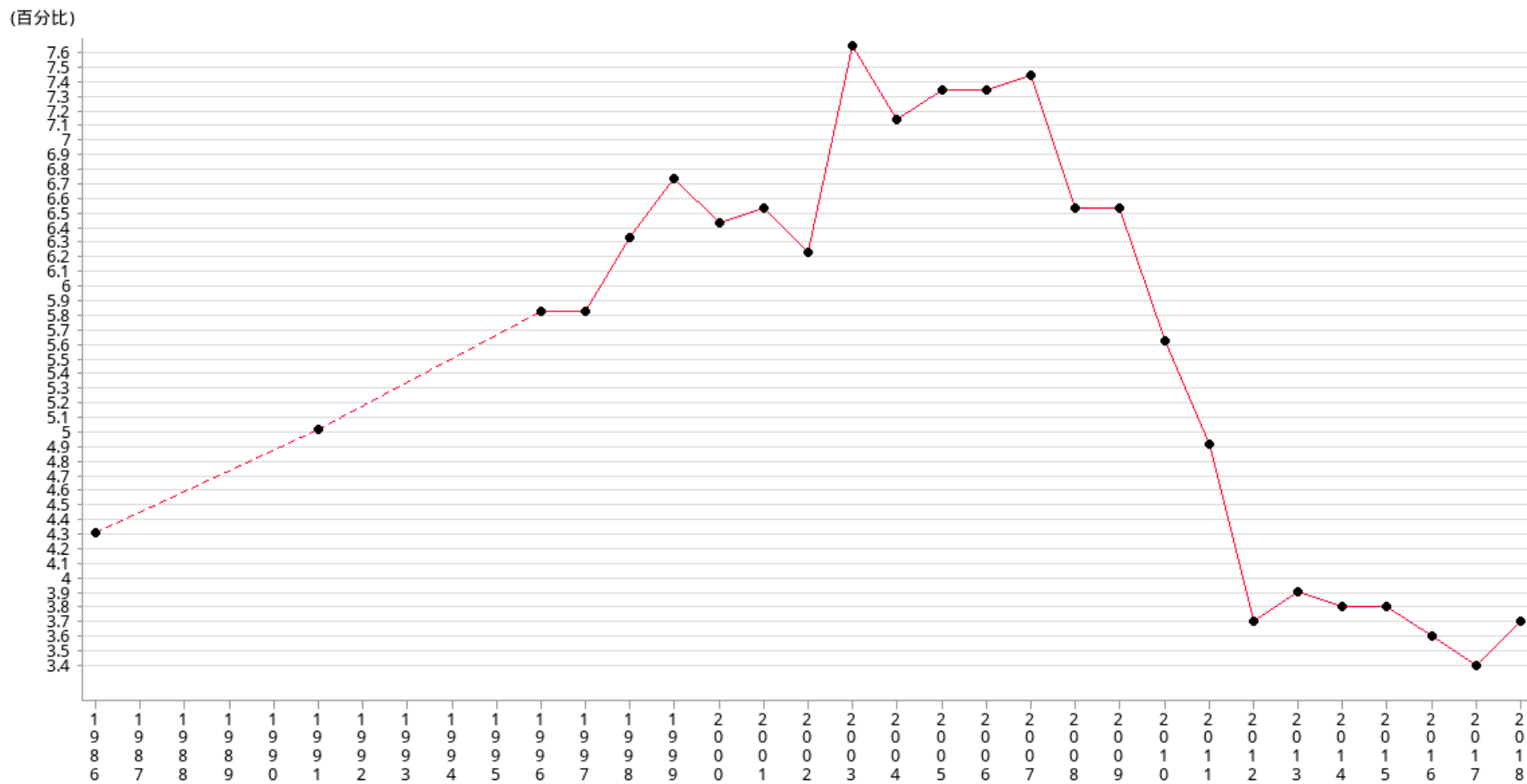


15-19 歲青少年接受職業訓練百分比



年份	1986	1991	1996	1997	1998	1999	2000	2001	2002	2003	2004	2005	2006	2007	2008
百分比	4.30	5	5.80	5.80	6.30	6.70	6.40	6.50	6.20	7.60	7.10	7.30	7.30	7.40	6.50
年份	2009	2010	2011	2012	2013	2014	2015	2016	2017	2018					
百分比	6.50	5.60	4.90	3.70	3.90	3.80	3.80	3.60	3.40	3.70					

操作定義

The percentage of Land-based non-institutional population (LBNP) aged 15-19 having attained technical/vocational training education.

備註

All figures are collected from Census and Statistics Department since 1986.

Further to C&SD (17Mar 2008), the term "vocational training" is not properly defined. Educational attainment refers to the highest level of education ever attained by a person in school or other education institution, regardless of whether he/she had completed the course. Also, only formal courses are counted. Figures therefore exclude (a) persons who have studied in Craft courses or Diploma/Certificate courses and then in courses at higher level of education; (b) persons who are receiving/have received vocational training by attending informal courses. According to C&SD (25Sep2009), starting from the year 2001, annual figures derived from the General Household Survey (GHS) may be different from those in the earlier edition. For the previous edition, the annual figures are compiled based on the average data for the four quarters of the year concerned. Starting from this edition, these statistics are compiled based on data collected in the General Household Survey from January to December of the year concerned as well as mid-year population estimates.